



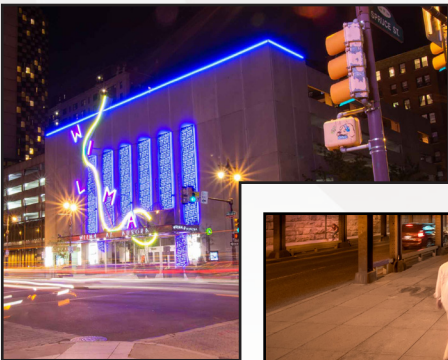
Version 5.5

# VIVID LIGHT STRIP STATIC PVC 24V



**For More Information**

**Toll Free: 1 (888) 580-6366**



UNITED STATES

Pacific Business Center  
1075 American Pacific Dr.,  
Ste. A Henderson, NV 89074

CANADA

264 Botsford Street,  
Suite 200 Moncton, NB  
E1C 4X7

GILLS reserves the right to make any design changes for continuous improvement which will not affect the overall appearance or performance.

[www.gills.com](http://www.gills.com)  
[www.ledneonflex.com](http://www.ledneonflex.com)

Light Dimension 0.59 x 0.24in (15x6mm) 10 LEDs/ft (36 LEDs/m)

Output	Red/Amber	Green/Blue/White
LED Light	Epistar 5050 SMD LED Chip	
Max Run Length		
Single Feed	59.06ft (18m)	49.21ft (15m)
Double Feed	118.11ft (36m)	98.43ft (30m)
Light Surface	Flat profile 160°	
Lumen Maintenance	70,000 Hours L70 @ 25°C : 90,000 L50 @ 25°C 50,000 Hours L70 @ 50°C : 70,000 Hours L50 @ 50°C	
Electrical		
Input Voltage	24V DC	
Power Consumption	1.22W/ft (4W/m)	1.83W/ft (6W/m)
Physical		
LED Count	10 LEDs/ft (36 LEDs/m)	
LED Spacing	1.31in (3.3mm)	
Cutting Unit Length	9.84in (250mm) (9 LEDs)	6.57in (167mm) (6 LEDs)
Thermal Management	Free air convection	
Fixture Connections	End, side & bottom lead wires	
Minimum Bend Diameter	1.97in (50mm) (Top Bending)	
Temperature Ranges		
Installation	32°F to 140°F (0°C to 60°C)	
Operating	-13°F to 140°F (-25°C to 60°C)	
Humidity	0-95% non condensing	
Dependability		
Warranty	5 Year Limited Warranty	
Safety		
Certification	Tested to UL & CSA by Underwriters Laboratory for use in USA and Canada, complies with California Title 24 Requirements, Lighting Facts. Exceeds ANSI C78.377A, CE & RoHS Compliant.	
IP Rating	IP67 with appropriately rated accessories	

\*Max Run Length: Unless otherwise stated, snap and seamless run lengths are the same.

Light Dimension 0.59 x 0.24in (15x6mm) 21 LEDs/ft (72 LEDs/m)

Output	Red/Amber	Green/Blue/White
LED Light	Epistar 5050 SMD LED Chip	
Max Run Length		
Single Feed	49.21ft (15m)	32.81ft (10m)
Double Feed	98.43ft (30m)	65.62ft (20m)
Light Surface	Flat Profile 160°	
Lumen Maintenance	70,000 Hours L70 @ 25°C : 90,000 L50 @ 25°C 50,000 Hours L70 @ 50°C : 70,000 Hours L50 @ 50°C	
<b>Electrical</b>		
Input Voltage	24V DC	
Power Consumption	2.44W/ft (8W/m)	3.66W/ft (12W/m)
<b>Physical</b>		
LED Count	18 LEDs/ft (60 LEDs/m)	
LED Spacing	0.66in (16.67mm)	
Cutting Unit Length	4.92in (125mm) (10 LEDs)	3.28in (83.3mm) (6 LEDs)
Thermal Management	Free air convection	
Fixture Connections	End & middle lead wires	
Minimum Bend Diameter	1.97in (50mm) (Top Bending)	
<b>Temperature Ranges</b>		
Installation	32°F to 140°F (0°C to 60°C)	
Operating	-13°F to 140°F (-25°C to 60°C)	
Humidity	0-95% non condensing	
<b>Dependability</b>		
Warranty	5 Year Limited Warranty	
<b>Safety</b>		
Certification	Tested to UL & CSA by Underwriters Laboratory for use in USA and Canada, complies with California Title 24 Requirements, Lighting Facts. Exceeds ANSI C78.377A, CE & RoHS Compliant.	
IP Rating	IP67 with appropriately rated accessories	

\*Max Run Length: Unless otherwise stated, snap and seamless run lengths are the same.

## 9 LEDs/ft (30 LEDs/m)

### Available Colors

Color	Wavelength/CCT
Red	620-630nm
Green	520-530nm
Blue	465-475nm
Amber	585-595nm
2200K	2238 ± 102K
2500K	2460 ± 120K
2700K (WW)	2725 ± 145K
3000K	3045 ± 175K
3500K (W)	3465 ± 245K
4000K	3985 ± 275K
4500K (CW)	4503 ± 243K
5000K	5029 ± 283K
5700K (DW)	5669 ± 355K
6500K	6532+510K

### Lumen Count

Color	Per Foot	Per Meter	Power
Red	>33.53lm	>110lm	1.22W/ft (4W/m)
Green	>83.82lm	>275lm	1.83W/ft (6W/m)
Blue	>16.76lm	>55lm	1.83W/ft (6W/m)
Amber	>33.53lm	>110lm	1.22W/ft (4W/m)
2200K (WW)	>107.00lm	>350lm	1.83W/ft (6W/m)
2500K (WW)	>122.00lm	>400lm	1.83W/ft (6W/m)
2700K (WW)	>122.00lm	>400lm	1.83W/ft (6W/m)
3000K	>122.00lm	>400lm	1.83W/ft (6W/m)
3500K (W)	>122.00lm	>400lm	1.83W/ft (6W/m)
4000K	>137.16lm	>450lm	1.83W/ft (6W/m)
4500K	>122.00lm	>400lm	1.83W/ft (6W/m)
5000K	>122.00lm	>400lm	1.83W/ft (6W/m)
5700K (DW)	>122.00lm	>400lm	1.83W/ft (6W/m)
6500K	>122.00lm	>400lm	1.83W/ft (6W/m)

2500K, 4500K, 5000K: Minimum order quantity of 200 meters.

## 21 LEDs/ft (72 LEDs/m)

### Available Colors

Color	Wavelength/CCT
Red	620-630nm
Green	520-530nm
Blue	465-475nm
Amber	585-595nm
2200K	2238 ± 102K
2500K	2460 ± 120K
2700K (WW)	2725 ± 145K
3000K	3045 ± 175K
3500K (W)	3465 ± 245K
4000K	3985 ± 275K
4500K (CW)	4503 ± 243K
5000K	5029 ± 283K
5700K (DW)	5669 ± 355K
6500K	6532+510K

### Lumen Count

Color	Per Foot	Per Meter	Power
Red	>67.06lm	>220lm	2.44W/ft (8W/m)
Green	>152.00lm	>500lm	3.66W/ft (12W/m)
Blue	>33.52lm	>110lm	3.66W/ft (12W/m)
Amber	>67.06lm	>220lm	2.19W/ft (7.2W/m)
2200K (WW)	>213.00lm	>700lm	3.66W/ft (12W/m)
2500K (WW)	>244.00lm	>800lm	3.66W/ft (12W/m)
2700K (WW)	>244.00lm	>800lm	3.66W/ft (12W/m)
3000K	>244.00lm	>800lm	3.66W/ft (12W/m)
3500K (W)	>244.00lm	>800lm	3.66W/ft (12W/m)
4000K	>274.32lm	>900lm	3.66W/ft (12W/m)
4500K	>244.00lm	>800lm	3.66W/ft (12W/m)
5000K	>244.00lm	>800lm	3.66W/ft (12W/m)
5700K (DW)	>244.00lm	>800lm	3.66W/ft (12W/m)
6500K	>244.00lm	>800lm	3.66W/ft (12W/m)

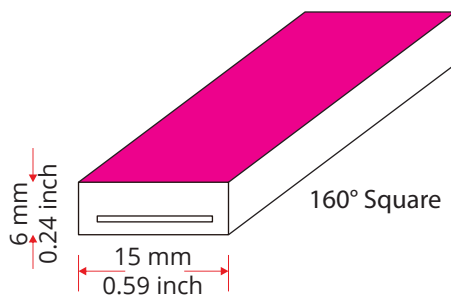
2500K, 4500K, 5000K: Minimum order quantity of 200 meters.

Available in Transparent, White, and Black casings.

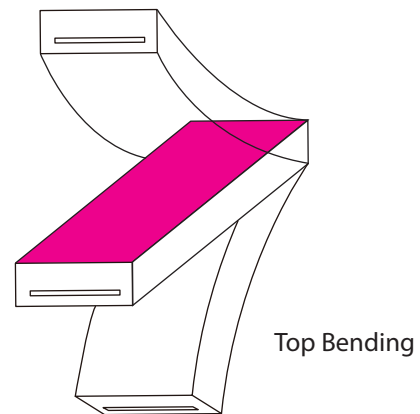
Custom Color Wavelengths available; please contact us for details.



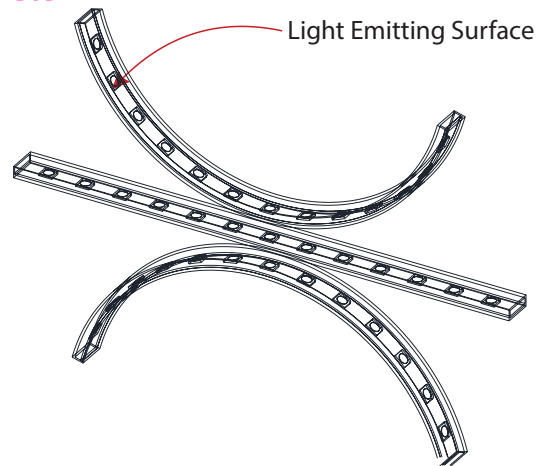
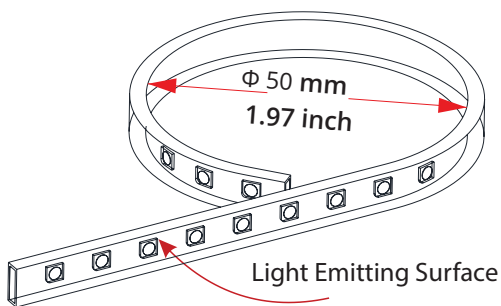
Light Profile



Bending Direction



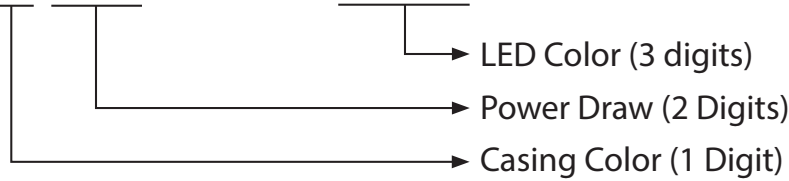
Minimum Bending Diameter





## Fixtures

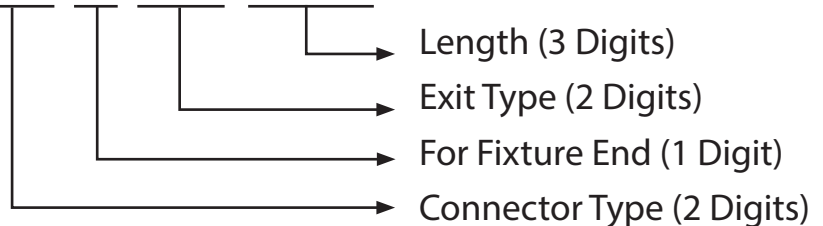
LS-15G-**X-XX-2W-E-XXX-24DC**



Casing Color (1 Digit)	Power Draw (2 Digits)	LED Color (3 digits)	
C - Clear	04 - 4W/m	RED	AMB - Amber
B - Black	06 - 6W/m	GRE - Green	BLU - Blue
W - White	07 - 7.2W/m	22K...57K - Color Temp.	
	12 - 12W/m		

## Lead Connector

SA-15G- I -00-2W-**XX-X-XX-XXX-P**



Connector Type (2 Digits)	For Fixture End (1 digit)	Exit Type (2 digits)	Length (3 digits)
SC - Snap Conenctor	1 - Input side	EN - End	0M3 - 0.98ft (30cm)
SE - Seamless	2 - Output side	BO - Bottom	01M - 3.28ft (1m)
	0 - Jumpers/T-Feeds/ Seamless (or Submersible) Bottom/Seamless (or Submersible) End	SL - Side left	03M - 9.84ft (3m)
		SR - Side right	05M - 16ft (5m)
		EJ - End jumper	10M - 32.81ft (10m)
		BJ - Bottom jumper	000 - For End Cap
		TF - Power T feed	
		EC - End Cap	

For full part number naming rules, please refer to the document on [www.glls.com/support/documentation/](http://www.glls.com/support/documentation/)

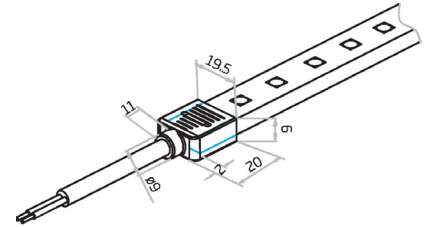
IP65: Rated for wet locations, not submersion. Factory Assembly only.

Seamless



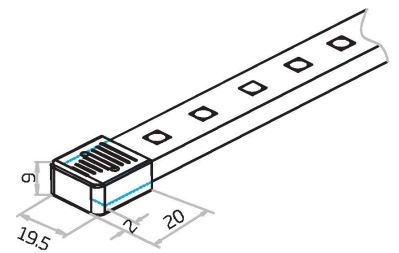
**Seamless End Exit**

SA-15G-I-00-2W-SE-0-EN-XXX-P



**Seamless End Cap**

SA-15G-I-00-0W-SE-1-EC-000-P  
SA-15G-I-00-0W-SE-2-EC-000-P

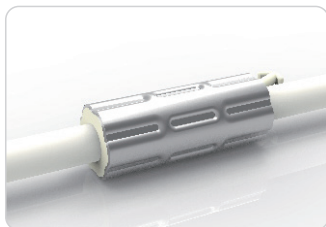
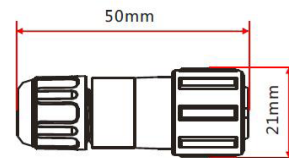


Barrel Connectors

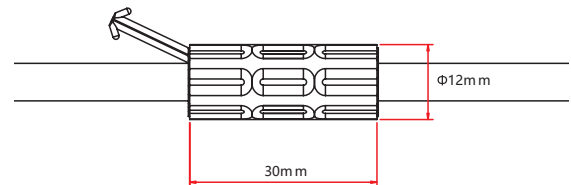


**Barrel Connectors**

- NA-XX-BC-DC-CXX-F
- NA-XX-BC-DC-CXX-M
- NA-XX-BN-XXA-CXX-F
- NA-XX-BN-XXA-CXX-M
- NA-XX-PL-XXA-CXX-F
- NA-XX-PL-XXA-CXX-M



**Anti-Wicking Ferrule**



**Anvil Cutter**

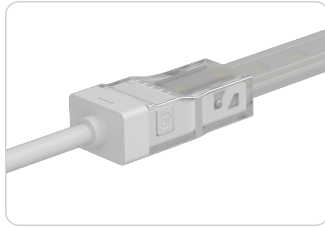
Optional accessory for on-site cutting.

\*Factory order only\*

IP67: Rated for outdoor use. Factory Assembly or DIY.

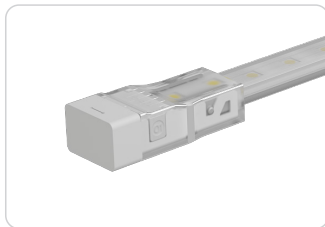
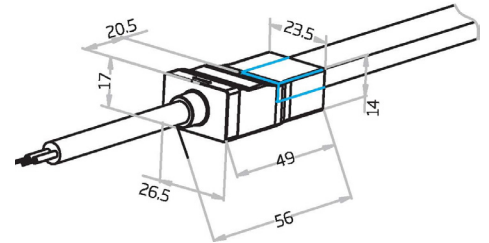


## Snap Connectors



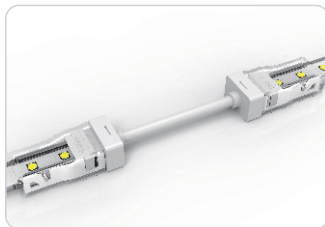
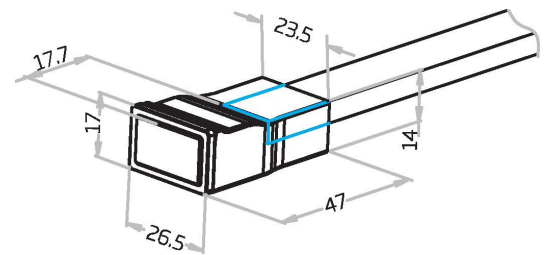
### Snap End Exit

SA-15G-I-00-2W-SC-1-EN-XXX-P  
SA-15G-I-00-2W-SC-2-EN-XXX-P



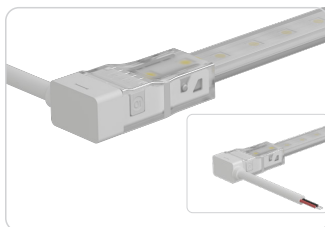
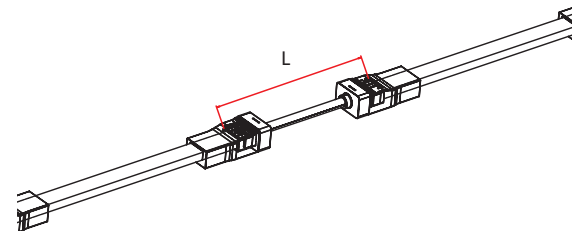
### Snap End Cap

SA-15G-I-00-0W-SC-1-EC-000-P  
SA-15G-I-00-0W-SC-2-EC-000-P



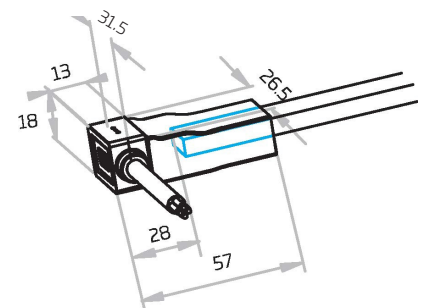
### Snap Jumper

SA-15G-00-1-2W-SC-0-EJ-XXX-P



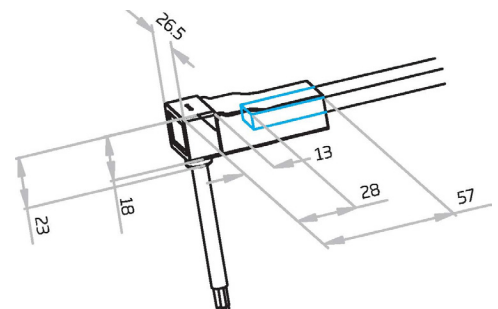
### Snap Side Exit

SA-15G-I-00-2W-SC-1-SL-XXX-P  
SA-15G-I-00-2W-SC-1-SR-XXX-P  
SA-15G-I-00-2W-SC-2-SL-XXX-P  
SA-15G-I-00-2W-SC-2-SR-XXX-P



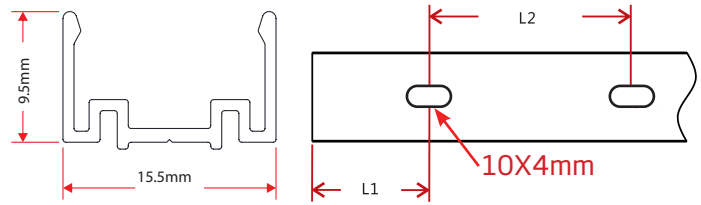
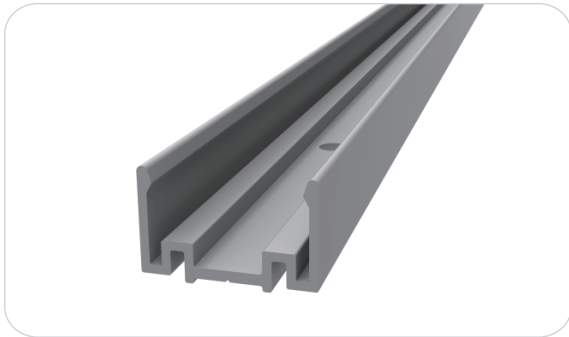
### Snap Side Exit

SA-15G-I-00-2W-SC-1-BO-XXX-P  
SA-15G-I-00-2W-SC-2-BO-XXX-P



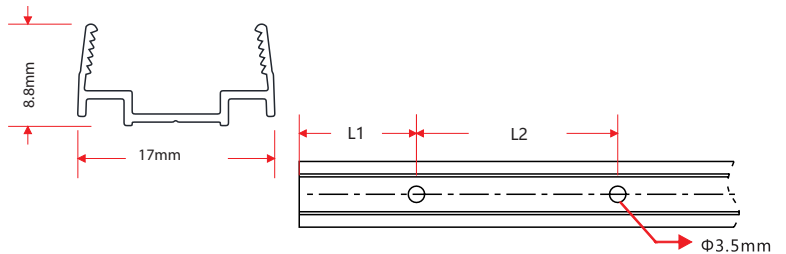


## Standard Anodized Aluminum Channel



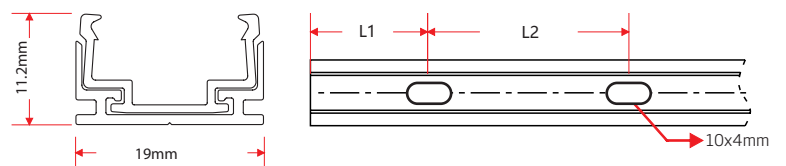
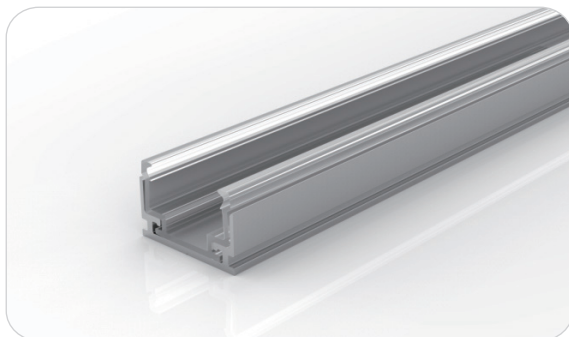
W x H	Standard Length	Part Number	L1	L2	Screw Hole $\Phi$	Hole #
0.54 x 0.87in (13.8 x 22mm)	1.38in (35mm)	CL-15-R-AL-3C5-SD	0.69in (17.5mm)	/	0.39in x 0.16in (10 x 4mm)	1
	19.69in (500mm)	CH-15-R-AL-0M5-SD	1.97in (50mm)	7.87in (200mm)	0.39in x 0.16in (10 x 4mm)	3
	39.37in (1000mm)	CH-15-R-AL-01M-SD	3.94in (100mm)	7.87in (200mm)	0.39in x 0.16in (10 x 4mm)	5
	78.74in (2000mm)	CH-15-R-AL-02M-SD	3.94in (100mm)	7.87in (200mm)	0.39in x 0.16in (10 x 4mm)	10

## Plastic Channel



W x H	Standard Length	Part Number	L1	L2	Screw Hole $\Phi$	Hole #
0.55 x 0.94in (14 x 24mm)	19.69in (500mm)	CH-15-R-PL-0M5-SD	1.97in (50mm)	7.87in (200mm)	$\Phi$ 0.14in (3.5mm)	3
	39.37in (1000mm)	CH-15-R-PL-01M-SD	3.94in (100mm)	7.87in (200mm)	$\Phi$ 0.14in (3.5mm)	5
	78.74in (2000mm)	CH-15-R-PL-02M-SD	3.94in (100mm)	7.87in (200mm)	$\Phi$ 0.14in (3.5mm)	10

## Plastic & Aluminum Channel



W x H	Standard Length	Part Number	L1	L2	Screw Hole $\Phi$	Hole #
0.55 x 0.59in (14 x 14.7mm)	1.38in (35mm)	CL-15-R-AP-3C5-SD	0.69in (17.5mm)	/	0.39in x 0.16in (10 x 4mm)	1
	19.69in (500mm)	CH-15-R-AP-0M5-SD	1.97in (50mm)	7.87in (200mm)	0.39in x 0.16in (10 x 4mm)	3
	39.37in (1000mm)	CH-15-R-AP-01M-SD	3.94in (100mm)	7.87in (200mm)	0.39in x 0.16in (10 x 4mm)	5
	78.74in (2000mm)	CH-15-R-AP-02M-SD	3.94in (100mm)	7.87in (200mm)	0.39in x 0.16in (10 x 4mm)	10

## Certifications

	Testing Organization	Certificate Serial N°	Report Reference
UL 2108	UL	20160726-E360029	E360029-2013
CE-EMC	SGS	SZEM1702001259LMV	SZEM160600421302

## Fixture Testing

### Optical Testing

Spectrum Analysis	IES LM 79 (Lumen, CCT, CRI, XY, SDCM, wavelength)
Photometric Distribution	IES LM 73 (Lumen intensity distribution & Lux diagram)
Lumen Maintenance & Lifetime	IES LM 84 & IES TM28

### Temperature Testing

Normal Temperature Test	UL1598 & UL2388 & IEC60598-1 & IEC60598-2-21
Abnormal Operation Test	UL1598 & UL2388 & IEC60598-1 & IEC60598-2-21

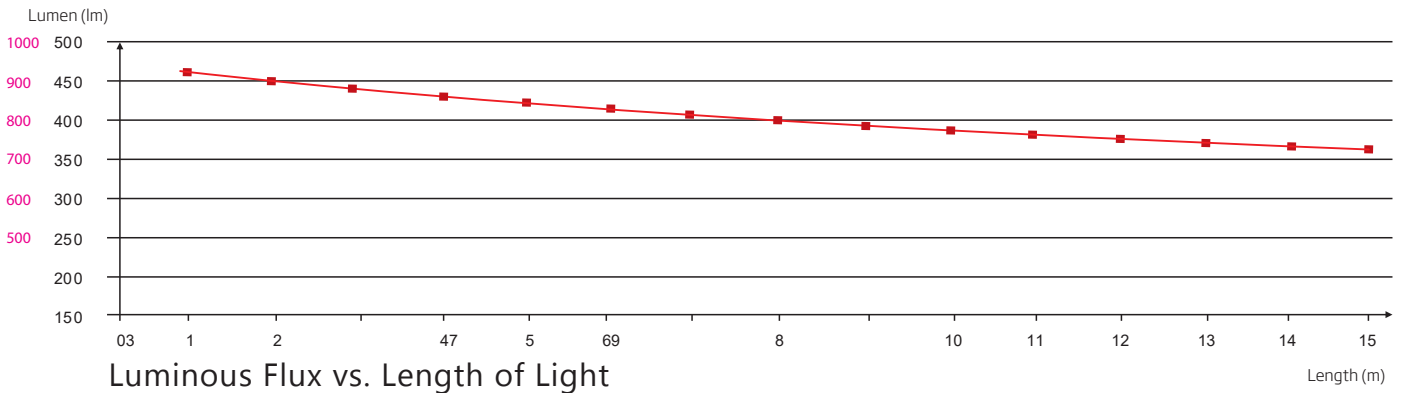
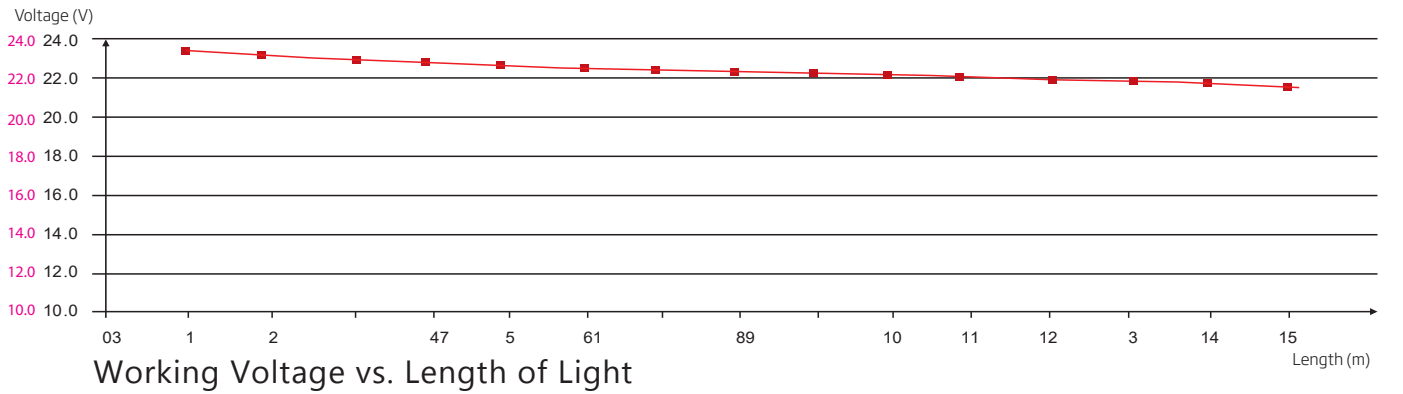
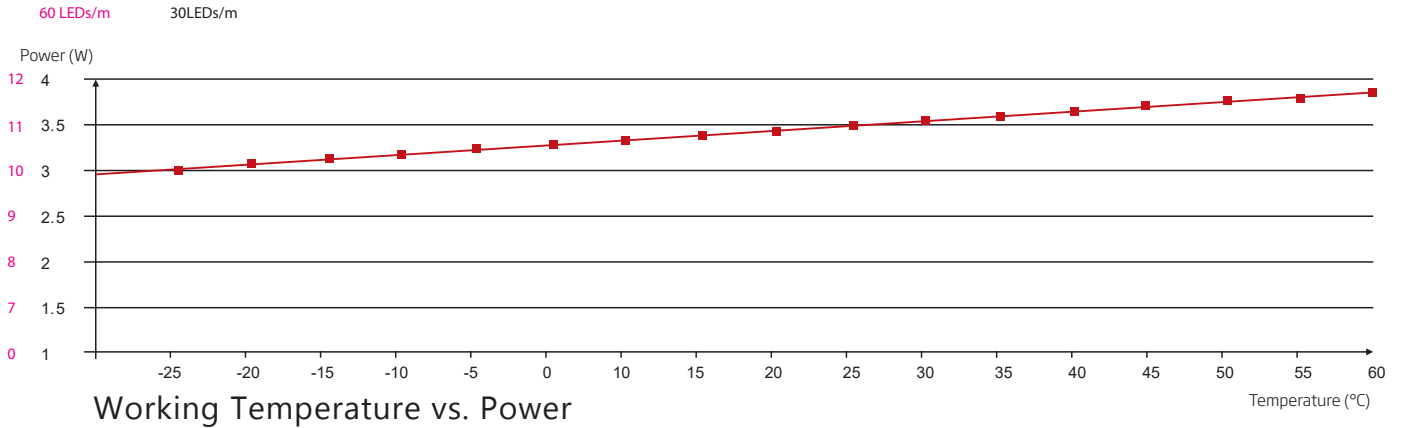
### Durability Testing

Bending Test	Manufacturer-defined, 500 cycles
Swing Test	UL2388, >750 cycles
Tensile Test	Manufacturer-defined, > the weight of light in max. connection length double feed
Twist Test	Max connection length double feed Manufacturer-defined, >200 cycles
Ball Impact	UL1598 & UL2388 & IEC60598-1 & IEC60598-2-21
IK07 IK08	IEC62262

### Environmental Testing

Chlorinated Water Immersion	BG9667, PH6.8-7.6, free chlorine 0.3-0.6mg/L
Salt Water Immersion	IEC60598-1, Salinity 4%
Salt Spray Test	IEC68-2-11
Outdoor Exposure	Manufacturer-defined
Flame Resistance	UL94
UV Exposure	ASTMG 154, ISO 4892-3, UVA @ 340nm
IPX5, IPX6, IPX7, IPX8	IEC60529
Temperature Shock	Manufacturer-defined, -40°C - 60°C (typical temperature range)
Constant Temperature	Manufacturer-defined

# Charts



# Charts

## ANSI STANDARD

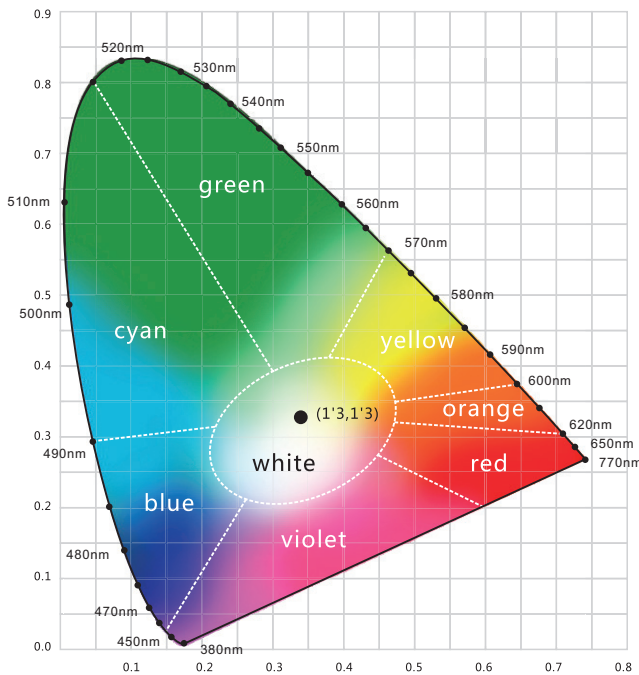
### Nominal CCT Categories

Nominal CCT	Target CCT and tolerance(K)	Target $D_{uv}$	$D_{uv}$ Tolerance Range
2200K	2238 ±102	0.0000	Tx:CCT of the source
2500K	2460±120	0.0000	For Tx<2870K
2700K	2725 ±145	0.0000	0.000±0.0060
3000K	3045±175	0.0001	For Tx≥2870K
3500K	3465±245	0.0005	$D_{uv}(Tx)±0.0060$
4000K	3985±275	0.0010	where
4500K	4503±243	0.0015	$D_{uv}(Tx)=57700 \times (1/Tx)2$
5000K	5029±283	0.0020	-44.6 × (1/Tx)
5700K	5667±355	0.0025	+0.00854
6500K	6532±510	0.0031	

Remark:

- 1)  $T_f$  is chosen to be at 100K steps (2300,2400,.....,6400K),excluding the ten nominal CCTs listed in Table 1.
- 2)  $\Delta T=1.1900 \times 10^8 \times T^3 - 1.5434 \times 10^4 \times T^2 + 0.7168 \times T - 902.55$
- 3) Same as in the  $D_{uv}$  Tolerance Range.

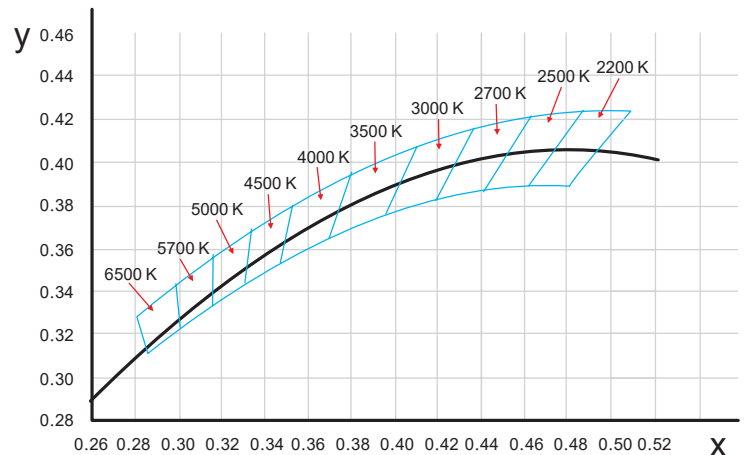
Flexible CCT (2200-6500K)	$T_f^{(1)} \pm \Delta T^{(2)}$	$D_{uv} T_f^{(3)}$
---------------------------	--------------------------------	--------------------

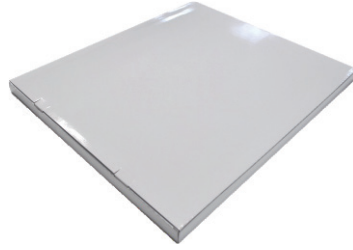
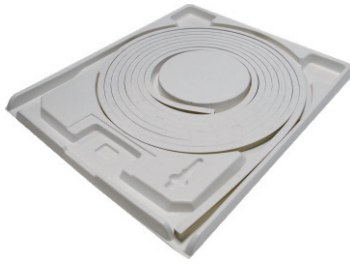


### Light Color



### (X,Y) Chromaticity Diagram





White Box

Packing Box

Fixture Length	White Box Dimensions	Packing Box Dimensions	# Of White Boxes	Package Weight
196.85in (5m)	15.35x2.05x19.67in (39x5.2x50cm)	20.47x15.34x11.02in (52x41x28cm)	5	30.86lbs (14kg)
393.7in (10m)	20.08x2.05x24.41in (51x5.2x62cm)	25.2x20.87x11.02in (64x53x28cm)	5	57.32lbs (26kg)
393.7in (10m)	20.08x2.05x24.41in (51x5.2x62cm)	25.2x20.87x6.9in (64x53x17.5cm)	3	35.27lbs (16kg)
787.4in (20m)	26.77x2.05x31.1in (68x5.2x79cm)	31.9x27.56x4.92in (81x70x12.5cm)	2	48.5lbs (22kg)